



Welcome back to school - we hope that you all had a lovely Easter break. This term our topic is **The Great Fire of London**.

School Uniforms

We love seeing all the children looking smart in their full school uniforms and plain black shoes. Please ensure that **everything is named** so we can reunite children and missing items easily. Anything lost and unnamed goes into the Lost Property box.

PE Kits

Please make sure these are named and in school all week. (On Tuesdays children can come to school in their PE kits/tracksuits.)

Coats and Wellies

Please ensure children come to school with a suitable coat. Children with wellies in school will be allowed to use the field at play and lunchtimes in all weathers.

Staying Healthy

Being well hydrated is important for learning. Please ensure your child has a named water bottle with a sports lid in school **at all times**. Alverton has a 'healthy tuck' policy for infants and fruit is provided at playtimes. Please don't send children into school with sweets, crisps, chocolate etc. for tuck.

Helping in School

If you are able to commit to reading with children on a regular basis, please speak to the office.

Learning in Key Stage 1

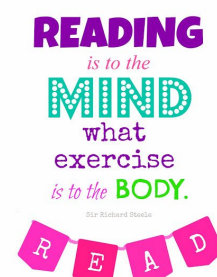
We believe learning as an infant should be an imaginative, creative and immersive experience. Our aim is to create children who are passionate, resilient and increasingly independent learners who can reflect on and take pride in their achievements.

Supporting at Home

Please read with your child every day! It really is **the single most important** way you can help support your child's learning. Spellings and **optional** topic homework grids are sent home termly. Children will also have access at home to some web-based apps that the school pays for. More details will be available from your class teacher.

Working Together

If you would like to meet your class teacher to discuss how best to support your child (or for any other reason!) then please do not hesitate to arrange an appointment. After school is normally best as we will have more time to talk then.





English

We will be looking at a range of texts about the Great Fire of London to base our writing on. We will continue to practise our handwriting and common exception for words for spelling.



Maths

We will follow the White Rose scheme of Maths, building on all the children's prior knowledge.



Science

In Science we will continue to understand seasonal changes and identifying survival needs for humans and animals.



Geography & History

We will research the events that led to the Great Fire of London. We will compare London today with London then and discuss differences and similarities and then identify changes that occurred after the event.



Computing

We will explore how to communicate and stay safe online and create a story using text, audio and illustrations.



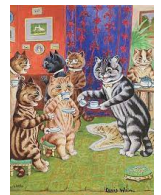
RE

In RE we will be thinking about Christianity and the good news Jesus brings about peace and forgiveness, and how we can translate this to our own lives.



Art & DT

In art we will explore printing, the work of Louis Wain and explore colouring mixing. In D/T we will make a vehicle with wheels and axles.



PE

In PE we will be practising our basic athletic skills and preparing for Sports Day.



PSHE

We will follow the 'Go Givers' scheme of work looking at the differences between wants and needs, where money comes from and why we save money, and about health eating choices. Also we will learn about relationships and how we grow and change.

